

Operating Instructions

Model: PRT-EW

Compatible with RC2-W

Revision 1 11/09

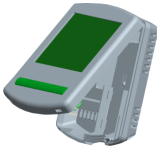
Contents Page

Install Procedure	2-3
Pairing the Thermostat	4-5
Icons Explained	6
Temperature Display	6
Setting the Clock	7
Locking the Thermostat	7
Comfort levels Explained	8-9
Setting the Temperature	11
Holiday Feature	12
Factory Reset	13
Optional Features Explained	14-18
Optional Feature Setup	19-20

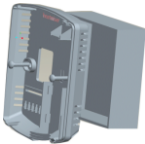
Installation Procedure

Mount the thermostat at eye level.

Installation



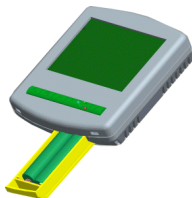
Carefully separate the front half of the thermostat from the back plate by placing a small flat head terminal driver in to the slots on the bottom face of the thermostat.



Fix the back plate to the wall. Clip the front of the thermostat to the back plate.

Installing the Batteries

2 AAA batteries are supplied with the thermostat.



To access the battery holder, push and release the compartment door (located on the bottom face of the thermostat)

Install the batteries in the holder, following the polarity of the batteries. Then push the holder back inside the thermostat.

You should replace the batteries in the thermostat when the battery icon is displayed on the LCD. Ensure you replace the batteries within 1 minute in order to regain the current clock setting.

Pairing the Thermostat







With the thermostat turned off

- Press the Clock button until the LCD comes on.
- You will now see a small number 01 in the top right corner of the LCD. This is feature 01
- Press Clock again until you see feature 07 (Receiver Address)
Use the Up/Down keys to set the address. A unique receiver address must be set for each receiver installed. (RF is disabled if receiver Address is set to 00)
- Press A to accept, the display will now go blank.

Pairing the thermostat

- On the receiver, press and hold the pairing button until the Comms LED comes on
- Turn off the thermostat by holding down the power button.
- On the thermostat, press the A key for 5 seconds. The thermostat will send a signal for 1 minute, and will flash the RF signal icon.
- If successful, the receiver will flash the Comms LED.
- Press the Pairing Button on the receiver to store
- If the pairing is unsuccessful, reposition the thermostat and try again.

Icons Explained

Heating On	
Heating Off – Frost Mode	
Key Lock	
RF Signal Active	
Battery	
Holiday Active	

Temperature Display

Room Temp = This is the current room temperature.

Set = This is the temperature you are trying to achieve in your home.

Setting the Clock

To set the clock, follow the steps below.

- With the thermostat turned on, press the Clock button twice
- You are now able to set the minutes using the Up/Down keys
- Press H to accept
- You are now able to set the hours using the Up/Down keys
- Press H to accept
- You are now able to set the day of the week using the Up/Down keys
- Press A to store and exit

Locking the Thermostat

The thermostat has a key-lock facility. To enable, follow these steps;

- Press and hold the A and Down key for 10 seconds
- You will see the lock symbol appear
- To unlock, repeat the steps above.

Comfort Levels Explained

The thermostat provides Weekday/Weekend or 7 Day programming. You should consult the Configuration Menu section to select the required mode.

The thermostat is supplied with comfort levels already programmed, but these can be changed easily. The default times are;

08:00 – 21C (Wake)

09:30 – 16C (Leave)

16:30 – 22C (Return)

23:00 – 17C (Sleep)

If you only want to use 2 levels, you should program the unused levels to --.—

- To begin programming the comfort levels, press Clock Once
- If your thermostat is setup for Weekday/Weekend programming, you will see Mon-Fri shown. For 7 day programming you will see Monday, you need to use Up/Down arrow keys to select which day you would like to program and then press H key to confirm
- Using the Up/Down arrow keys, enter the required Wake time
- Press H
- Using the Up/Down arrow keys, enter the required Wake temperature
- Press H
- You will see Leave

- You should repeat the programming for each period, entering --.—for unused periods.

Note: For weekday/weekend programming, the 4 comfort levels are the same for all weekdays. For 7 day programming, each day can have 4 different comfort levels.

Temperature Hold

The temperature hold function is ideal for parties or when you will be going out for a number of hours. It allows you to hold a temperature for a desired period.

- Press H
- Using the Up/Down arrow keys enter the required hold time
- Press H
- Using the Up/Down arrow keys enter the required hold temperature
- Press A to accept

You will see the Hold indication is displayed which will countdown the hold duration. To cancel, reduce the Hold time to 00 hours

Temperature Set

Using the Up/Down arrow keys allows you to adjust the set temperature. When you press either of these keys, you will see the word SET and the desired temperature.

Press A to accept.

Heat On/Off

Frost Protect: Pressing the power button once will place the thermostat in frost protect mode. In this mode, the thermostat will display the frost icon and will only turn the heating on should the room temperature drop below the set temperature. Should the heating be turned on whilst in frost mode, the flame symbol will be displayed. To cancel the frost protect mode, press the power button.

Thermostat off:

To turn the thermostat off completely, press and hold the power button. The display and heating output will be turned off. To turn the thermostat back on, press the power button.

Holiday

The thermostat has a holiday function. This allows you to enter a holiday setting. During a holiday, the thermostat will maintain the frost set temperature. At the end of your holiday, the thermostat will revert back to the programmed setting ensuring that your home is warm on your arrival.

- Press H three times (Until you see the suitcase)
- Using the Up/Down arrow keys, enter the number of days holiday
- Press A to accept

The thermostat will show a suitcase indicating the thermostat is in holiday mode. To cancel, reduce the Holiday duration to 00 days.

Factory Reset

The thermostat has a factory reset function. This will reset all settings back to their factory default. To perform a factory reset, follow these steps;

- Turn the thermostat off
- Press and hold the Power and Up arrow key until the LCD powers up. All of the icons will be displayed. When they have disappeared, the thermostat has been reset.

**THE FOLLOWING SETTINGS ARE OPTIONAL AND IN MOST CASES
NEED NOT BE ADJUSTED**

Optional Features Explained

Feature 01 – Temperature Format: This function allows you to select between C/F

Feature 02 - Switching Differential: This function allows you to increase the switching differential of the thermostat. The default is 1C which means that with a set temperature of 20C, the thermostat will switch the heating on at 19C and off at 20C. With a 2C differential, the heating will switch on at 18C and off at 20C

Feature 03 – Frost Protect: You can set whether the thermostat will maintain the frost temperature when the thermostat display is turned off. As a default, this is enabled

Feature 04 – Frost Protect Temperature: This is the temperature maintained when the thermostat is in frost mode. The range is 07-17C. The default is 12C and is suitable for almost all applications.

Feature 05 – Output Delay: To prevent rapid switching, an output delay can be entered. This can be set from 00-15 minutes. The default is 00 which means there is no delay.

Feature 06 – Not used on this model

Feature 07 – Receiver Address: Within one building, up to 32 standalone receivers can be used. Each receiver must have a unique receiver address.

Feature 08 – Not used on this model

Feature 09 – Not used on this model

Feature 10 – Fail Safe

If enabled, the thermostat will send a signal to the receiver every 20 minutes. Should the receiver fail to receive two signals, the receiver will activate the output for 20% of the time. This is to protect the system against a loss of wireless signal or should the thermostat battery fail whilst you are away.

Feature 11 – Up/Down Temperature Limit

This function allows you to limit the use of the up and down temperature keys. This limit is also applicable when the thermostat is locked and so allows you to give others limited control of the heating system.

Feature 12 – Sensor Selection

On this thermostat you can select between built in air sensor and remote air sensor. A floor sensor **must** be connected to the receiver before it will operate.

Feature 13 – Floor Limit

This thermostat uses the floor limiting sensor connected to the receiver to protect the floor surface from overheating. The floor limit is set from the thermostat but stored in the receiver. Should the RF link fail, the receiver will limit the floor from overheating. The limit can be adjusted from 20-45C

Feature 14 – Optimum Start Optimum start will delay the start up of the heating system to the latest possible moment to avoid unnecessary heating, so that the dwelling is comfortably warm by the programmed time. The thermostat uses the rate of change (see below) setting to calculate how long the building needs to take to raise the building 1C (with a rate of change of 20, the thermostat has calculated the building needs 20 minutes to raise the building 1C)

Feature 15 – Rate of Change For information only

Feature 16 – Programming Mode The thermostat offers two programming methods. Weekday/Weekend allows you to program 4 comfort levels for the weekday and 4 different comfort levels for the weekend. In 7 day program mode, each day has 4 comfort levels that can be programmed independently.

Adjusting the Optional Settings

1. To access the configuration menu, turn off the thermostat by pressing and holding down the power button.
2. Press and hold down the Clock button until the display comes on.
3. The small number is the feature number, the large number is the setting value
4. Use the clock button to cycle through the features.
5. Use the Up/Down keys to change the setting.
6. Press A to accept and store.

Feature Table

Feature	Description	Setting
01	Temperature Format	00=C 01=F
02	Switching Differential	01-03C 00C Default
03	Frost Mode	00= Disabled 01 =Enabled (01= Default)
04	Frost Temperature	07-12C (12C Default)
05	Output Delay	00-15 Minutes (00 Default)
06	Not used on this model	
07	Receiver Board Address	Standalone = 01-32 01-32, 00 default
08	Not used on this model	

09	Not used on this model	
10	Fail Safe	00 Disabled 01 Enabled Default 00
11	Up/Down Limit	00-10C 00C Default
12	Sensor Selection	00 = Built in air sensor 01 = Remote air sensor
13	Floor Limit	20-45C Default = 28C
14	Preheat Setting	00-03 hours 00 default
15	Rate of Change	Non adjustable
16	5/2 Day or 7 Day Programming	00 = 5/2 day 01 = 7 day 00 default